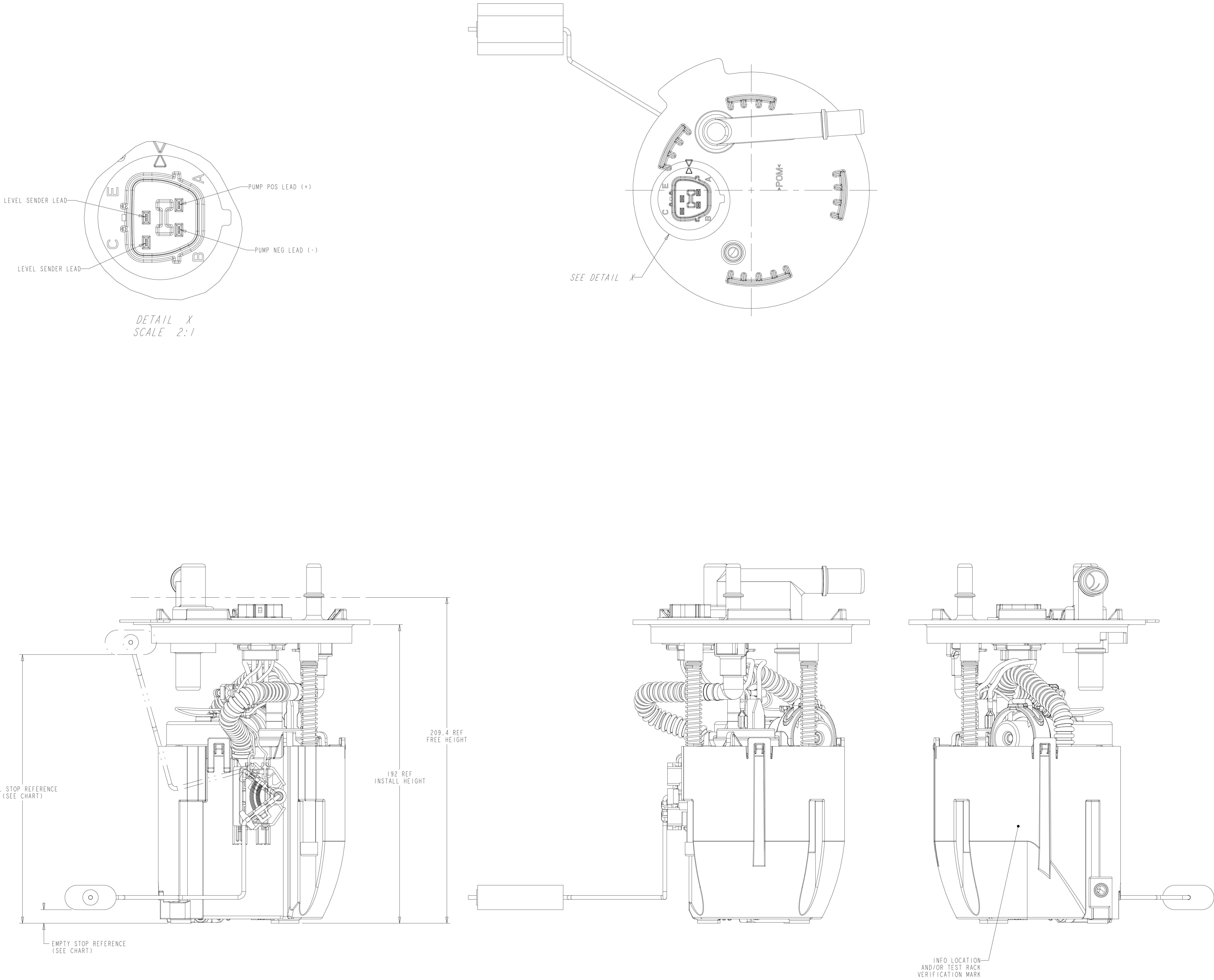


| REVISIONS | | | | | | |
|-----------|-----|--|-----------|---------|-----|--------|
| ZONE | LTR | DESCRIPTION | CHANGE No | DATE | BY | APPR'D |
| | AA | INITIAL RELEASE | DR56148 | 05FEB16 | SLK | DJC |
| | AB | CHG VLV TO ITR, UPDATE COMPONENTS | DR60158 | 07OCT16 | SLK | DJC |
| | AC | AC1 ADDED ESD GROUND AC2 CHANGED PUMP | DR62547 | 14AUG17 | SLK | DJC |



| LEVEL SENDER UNIT HEIGHT VS RESISTANCE | | |
|---|----------------|----------------------|
| FLOAT POSITION | HEIGHT (mm) | RESISTANCE (Ohms) |
| FULL STOP | 172.7 REF | 10 ± 2 |
| EMPTY STOP | 8.5 REF | 180 ± 4 |

- NOTES:
- SPECIAL CUSTOMER PACKAGING REQUIREMENTS MAY CALL FOR THE ADDITION OF SPECIFIC LABELS NOT SHOWN ON THIS DRAWING.
 - MODULE TO BE PACKAGED USING COMPONENTS NOTED ON BOM SO THAT CONTAMINATION FROM FOREIGN MATERIAL IS PREVENTED:
 - PLUG PROTECTORS ON PORTS
 - POLY BAG
 - SHOWN WIRE ROUTING MAY DIFFER FROM FINISHED PRODUCT.

METRIC

ALL DIMENSIONS ARE IN MILLIMETERS

DO NOT SCALE

DECIMAL TOLERANCES UNLESS OTHERWISE SPECIFIED
ONE PLACE ±0.25 TWO PLACE ±0.13 ANGLES ±1°

THIRD ANGLE PROJECTION

DIMENSIONS IN ACCORDANCE WITH ASME Y14.5 - 2009

TI Automotive

630 COLUMBIA ST.
CARO, MI 48723
+1 989.673.1723

ENGINEER: D.CATLIN OSFEB16 MATERIAL/SPECIFICATION:
SEE NOTES

DESIGNER: S.RADY OSFEB16

CAD SYSTEM: PROVE SCALE: 1:1 SHEET NO. 1 OF 1

REFERENCE TO: AR0038673/AC

REFERENCE TO: AR0038671/AC

DRAWING NAME:
FUEL MODULE OUTLINE

SIZE: A0 DRAWING NUMBER:
TU2010

| KEY PRODUCT CHARACTERISTICS | | |
|--|------|------|
| REFER TO TI AUTOMOTIVE GLOBAL ADVANCED QUALITY PLANNING DOCUMENT A-750-001-001 FOR THE CLASSIFICATION AND CONTROL OF KEY PRODUCT CHARACTERISTICS | 100% | 100% |
| ✓ SAFETY CHARACTERISTIC | 100% | 100% |
| ⊕ CRITICAL CHARACTERISTIC | 100% | 100% |
| ⊕ HIGH IMPACT CHARACTERISTIC | 100% | 100% |